

Wheelwright Lane News

3rd October 2023



Headteacher Message

The children have enjoyed another active week at school with trips and visits in different year groups and lots of sporting opportunities with Coventry University. We are delighted to be working in partnership with Coventry University this year. They are working with our staff to enhance our PE curriculum. We look forward to sharing our partnership work with you

Secondary School Place



If you have not already applied for your child's secondary school place please do so. The deadline for this is fast approaching and our local school Ash Green and President Kennedy have already hosted their open evening events. If you have any difficulties in completing the online admission form please speak with Mrs Rowe Monday – Wednesday who will be happy to help you. Please follow the link and apply before the deadline of 31st October 2023. Places for secondary school will be offered on March 1st 2024.

<https://admissions.warwickshire.gov.uk/Synergy/Enquiries/Citizen/citizen.aspx/admissions-signin>

Parent Association (PA)



Some of you may recall that last year our PA funding pot was nearly empty and we were unable to subsidise our Christmas trips in 2022. However, our dedicated PA have worked tirelessly to organize fun events for our pupils, working toward replenishing our funds. I am delighted to announce that we now have £4,000 which we will be using

to pay for all the coaches for our Christmas trips this year. We are also hoping that our funds will go towards school improvement priorities that will be influenced by our school council (voice of the pupils). Every year our children ask for a swimming pool! Even though we may not be able to reach this we are certainly keen to make some of our pupils' ideas a reality through the use of PA funding. Please do support our wonderful group, either by helping out or joining in with our activities and making it fun for the family.

Attendance



We continue to aim for **96% - 100%** attendance!

Last week our whole school attendance was **95.6%**

Here is our class attendance breakdown:

Rec	94%
Year 1	99%
Year 2	97%
Year 3	98%
Year 4	93%
Year 5	90%
Year 6	97%

Our attendance leads in school are:

Ms Rutherford – Head Teacher / Designated Safeguarding Lead

Mrs Harris – Deputy Head Teacher / Designated Safeguarding Lead

Mrs Rowe – Learning Mentor / Designated Safeguarding Lead.

If you have any queries around attendance please speak to one of the attendance team or check out our attendance information on our website <https://www.wheelwrightlane.warwickshire.sch.uk/attendance/>

Learning at Wheelwright Lane last week.



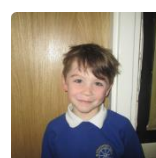
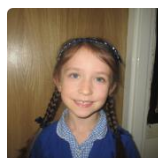
Year 1

Last week year 1 visited the farm and despite the rain they had lots of fun. Isabelle showed determination writing about her visit and Connor was brave enough to hold an owl!

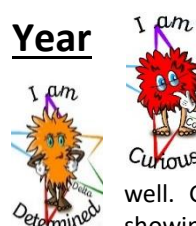


Year 2

Year 2 have been busy in their DT lessons. Leyla demonstrated bravery when she tried a different type of bread in their sandwich making task. Arley was also incredibly brave by carrying on with his learning despite his two pet rabbits sadly passing away the previous day. Well done Arley, many of us know how hard it is to lose a pet.



Year 3



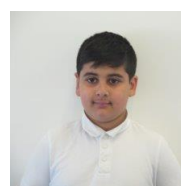
In year 3 Richard has been a determined learner by listening carefully and managing distractions well. Great work Richard. William has been showing our curious learning behaviour this week. He has taken up the challenge of naming all of the countries in Europe! Wow.



Year 4



Rohan has been a resilient learner in school recently. Even after setbacks Rohan has bounced back enabling him to make good progress. Chrisshine is a new pupil to year 4 and he has shown real bravery by making new friends and learning our routines, motto and learning behaviours!





Year 5



Year 5 have been showing lots of positive learning behaviours this week. Issy has been resilient in maths, digging deep and learning from mistakes. Mia has been brave by modelling her sentence work out loud to the class and George was resilient in maths using strategies to help with rounding numbers.



Year 6



Karol and Logan are new pupils to our school and they have busy demonstrating our learning behaviours. Karol has shown determination in maths using new multiplication methods and Logan has been brave by trying new things and working hard to learn the Wheelwright Lane way!



Date	Year	Event Details
Tuesday 10th October	Nursery	3:30 – 6:00pm Open Evening for new reception parents
Tuesday 10th October	5/6 Girls	St Michael's girls football match 4:00pm – 5:15pm
Thursday 19th October	All years (ticket sale)	PA Event Pumpkin picking and carving 3:30 – 5:00pm
Monday 23rd October	All years	Parents Evening 3:15 – 6:00pm
Wednesday 25th October	All years	Parents Evening 4:30pm – 8:00pm
Thursday 26th October	All years	Break Up for Half term
Friday 27th October	All years	Staff Inset Day SCHOOL CLOSED TO PUPILS
Monday 6th November	All years	Pupils Return to school 8:45am
Monday 13th November	Parents welcome	PA meeting in school 3:15pm. Welcome new members.

Diary Dates for this half term:

Best Wishes

Miss Rutherford

Headteacher.



World Mental Health Day



October 10

**On Tuesday 10th October,
wear something yellow for
World Mental Health Day!**

**Year 5 and 6 will be taking part in an emotional
health lesson with Connect for Health.**



Compass

**Wheelwright Lane Primary
School**



**Reception Open evening
3:30 - 6:00pm**

**If your child is due to start school in
September 2024 please come along to
our drop in session.**

Tuesday 10th October 2023

