

English

Reading.

We will be:

Continuing twice weekly guided reading sessions. During guided reading we will be developing decoding skills and comprehension skills.

Honing our decoding skills during daily phonics

sessions, practising how to sound out real words and 'alien' words & exploring alternate pronunciations for the same grapheme.

Listening to and discussing a wide variety of texts, including non-fiction, traditional and contemporary fiction and Poetry, focussing particularly on characters from traditional and contemporary stories.

Writing.

We will be:

Creating a new character, setting and story event (based on 'On The Way Home' by Jill Murphy).

Writing in role (as a character from 'The Three Little Pigs').

Writing a 'For Sale' advert—using appropriate adjectives and persuasive language.

Writing informal and formal letters

Spelling.

We will be continuing a weekly spelling test routine and expanding our knowledge of letters and sounds through our daily phonics sessions.

Grammar.

We will be

using full stops, capital letters, question marks and exclamation marks correctly and continue to practise reading our own writing to check that it makes sense.

Beginning to use question marks and exclamation marks.

Learning vocabulary that will enable us to discuss our and terminology written work with others e.g. Noun, adjective, punctuation, plural.

Maths

Number.

We will be:

Exploring odd and even numbers

Counting to and across 100, forwards and backwards in 2s, 5s and 10s with a particular focus on multiples of 5.

Identifying 1/10 more and less than any given number up to 100.

Adding and subtracting multiples of 10.

Solving one-step addition and subtraction and multiplication and division problems in the context of money

Other areas.

We will be:

Comparing and describing the weight of different objects.

Gathering data via tally charts and using this data to pose and answer questions

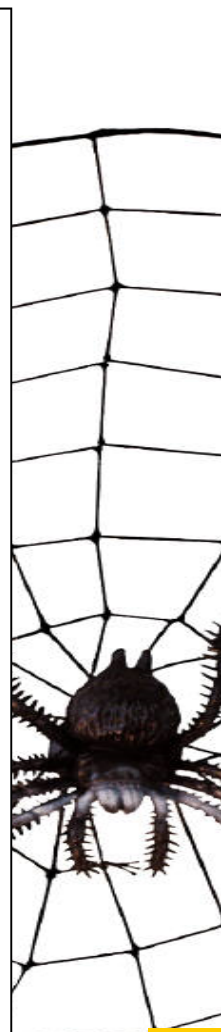
Problem solving / investigations.

We will be:

carrying out open ended investigations that will help us to make links and see patterns.

Playing games and carrying out activities to encourage the use of mathematical vocabulary and explanation.

Solving practical problems involving weight (kg & g)



Our Theme is

There's no Place Like Home

Science

Knowledge.

We will be:

Learning about the properties and uses of a variety of everyday materials.

Distinguishing between an object and the material from which it is made

Continuing our work on classifying animals

Working scientifically.

We will be:

asking questions and using observations and ideas to suggest answers to questions.

Identifying, describing, naming and sorting different materials and animals.

Performing simple tests to explore questions about different materials and their suitability for various uses.

Skills.

We will be questioning, observing, describing, comparing, naming, labelling, drawing, testing, measuring and explaining.

Ways You can help at home.....

- Read with your child every day.
- Help your child to practise their weekly spellings and complete homework.
- Use comparative language to describe weight e.g. Lighter, heavier, lightest, heaviest etc. & look for measurements of weight around the house or when out shopping
- Practise counting in 2s, 5s and 10s up to 100.
- Look closely at the external features of your house and compare them to others nearby.
- Help your child to learn their whole address (including the post-code).
-

R.E.

We will be:

- learning about special places (focussing on the Muslim and Christian faiths)
- Studying the features of a Christian place of worship (St. Giles Church)

P.E.

- With our sports coaches we will be having fun with the 'Fundamentals' programme, running, jumping, throwing and catching.
- We will be moving to music and learning dance sequences using the BBC 'Let's Move' programmes.

Art and Design.

We will be:

- creating artwork inspired by the work of L.S Lowry and including mixed media and techniques.
- Making carefully observed drawings of houses and homes.
- designing, making and evaluating a model house/home.

P.S.H.E.

We will be

- appreciating our local area and considering which features are appealing and where improvements could be made.
- Presenting a class assembly about this half term's topic.
- Writing letters to our friends in order to find out more about each other.

Our Theme is There's no Place Like Home

I.C.T.

We will be:

- Learning how to send an e-mail.
- Discussing and practising different ways of navigating through websites.
- Using the internet and a software program to find out about the features of a church.

Music

- Use voices expressively and creatively by singing songs and speaking chants and rhymes.

Humanities.

We will be:

- Learning about the life and work of L.S. Lowry
- Studying our local area and comparing it to an area in another country
- Using simple compass directions (North, South, East & West) and directional language to describe the location of features and routes on a map.
- Placing features in approximately the correct location on a map.
- Learning our own address and learning about the journey of a letter and the postal system.
- closely observing a beech tree in the school grounds throughout the year to see what happens to it as the seasons change.
-